

For Sales, Service & Spares contact:

Optimax
Imaging Inspection Measurement

Michael Francis House • 3 Trimbush Way
Market Harborough • Leicestershire • LE16 7XY
Registered in England No. 5562754
VAT No. 780 4974 94

T +44 [0]1858 436940 F +44 [0]1858 436941
E info@optimaxonline.com www.optimaxonline.com

Vision
ENGINEERING



Video Inspection System

Full HD (1080p)

inspect • rework • repair

Vision Z₂ **FULL HD 1080p**

Full HD Video Inspection System

Exceptional live imaging. Effortless simplicity.



With VisionZ₂, it is all about the exceptional HD image.

And the simplicity. And the versatility. And the high quality, ergonomic design... all packed into a compact, lightweight unit, making VisionZ₂ highly portable too.

VisionZ₂ is ideal for a very wide range of precision magnification tasks, including:

Production areas, R&D, Laboratory, Micro assembly, Electronics, Micro mechanics, Automotive, Dental technology, Medical device, Forensics, Quality control tasks, Presentation and training...

- ✓ Exceptional full HD high contrast imaging.
- ✓ Integral image capture via USB.
- ✓ Extremely large field of view (295mm with standard 4D lens)
- ✓ Large working distance (250mm with standard 4D lens)
- ✓ Zoom magnification options up to 122x



Just plug in your USB stick...

Vision
ENGINEERING

Vision Engineering has over 50 years experience in the design and production of innovative inspection and measurement systems for the manufacturing sector.

Vision Engineering is ISO 9001:2008 certified. VisionZ₂ is manufactured in the EU and fully CE (EMC & safety) approved.



System details



- ✓ HD 1080p camera (1920x1080)
- ✓ 1.8x - 50x magnification*
- ✓ Instant image capture via USB
- ✓ 250mm working distance*
- ✓ Auto or manual focus
- ✓ Adjustable LED illumination

* with standard 4D lens

System functions are accessed via an integrated keypad.

- Zoom in / out
- High contrast mode
- Crosshair size / colour
- Brightness
- Overview
- Image capture

Options

Struktura stand

Keep the workspace clear. Provides wide adjustment of the working distance, with ergonomically positioned monitor stand.

Note: VESA monitor interface required for Struktura stand.



Magnification

(with 24" monitor)

Lens	Magnification
3D	1.3x - 36x
4D*	1.8x - 50x
5D**	2.3x - 62x

* standard option with Benchtop stand

**standard option with Struktura stand

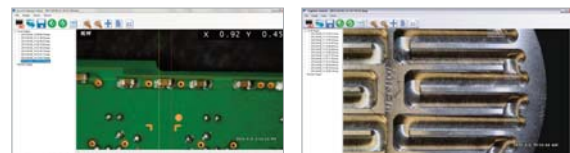
External control console

The intelligent control console includes additional functions such as memory save / recall, image capture, overlay grid & dimensioning lines, as well as the convenience of mouse control.



Imaging software

Instantly capture an HD image. The captured images can be used for further processing, or stored in a variety of formats including BMP, JPEG & TIFF.



Note: An HD (720p) camera option is also available.

Technical

Optical Data

Lens	Working distance (max.)	Magnification range*	Field of view min. magnification (width)	Field of view min. magnification (height)	Field of view max. magnification (width)	Field of view max. magnification (height)
3D	333mm	1.3x - 36x (71x digital)	390mm	226mm	14.2mm (8mm digital)	7.9mm (4mm digital)
4D	250mm	1.8x - 50x (98x digital)	295mm	172mm	10.3mm (5mm digital)	5.7mm (2.8mm digital)
5D	200mm	2.3x - 62x (122x digital)	234mm	137mm	8.2mm (4mm digital)	4.6mm (2.2mm digital)

* with 24" monitor.

4D lens standard option with Benchtop stand.

5D lens standard with Struktura stand.

Specifications

Camera resolution	HD 1080p (1920x1080)
Connections	HDMI out
Focus	Auto / manual
Dimensions	Benchtop stand: 410 mm x 240 mm x 350 mm Struktura stand: Height 700 mm x Arm max reach 800 mm
Weight	2.5kg
Power supply	100/240V, 50/60Hz
Power consumption	8 Watts
Recommended monitor*	16:9 DVI & HDMI Response time: 5ms Signal: HD 1080p

* Available with, or without monitor

Contact your Vision Engineering representative for recommended monitors.

For more information...

Vision Engineering has a network of offices and technical distributors around the world. For more information, please contact your Vision Engineering branch, local authorised distributor, or visit our website.

Vision Engineering Ltd.
(**Manufacturing**)
Send Road, Send,
Woking, Surrey, GU23 7ER, England
Tel: +44 (0) 1483 248300
Email: generalinfo@visioneng.com

Vision Engineering Ltd.
(**Commercial**)
Monument House, Monument Way West,
Woking, Surrey, GU21 5EN, England
Tel: +44 (0) 1483 248300
Email: generalinfo@visioneng.com

Vision Engineering Inc.
(**Manufacturing & Commercial**)
570 Danbury Road,
New Milford, CT 06776 USA
Tel: +1 (860) 355 3776
Email: info@visioneng.com

Vision Engineering Inc.
(**West Coast Commercial**)
745 West Taft Avenue,
Orange, CA 92865 USA
Tel: +1 (714) 974 6966
Email: info@visioneng.com

Vision Engineering Ltd.
(**Central Europe**)
Anton-Pendele-Str. 3,
82275 Emmering, Deutschland
Tel: +49 (0) 8141 40167-0
Email: info@visioneng.de

Vision Engineering Ltd.
(**France**)
ZAC de la Tremblaie, Av. de la Tremblaie
91220 Le Plessis Paté, France
Tel: +33 (0) 160 76 60 00
Email: info@visioneng.fr

Vision Engineering Ltd.
(**Italy**)
Via Cesare Cantù, 9
20092 Cinisello Balsamo MI, Italia
Tel: +39 02 6129 3518
Email: info@visioneng.it

Vision Engineering
(**Brasil**)
Email: info@visioneng.com.br

Nippon Vision Engineering
(**Japan**)
272-2 Saedo-cho, Tsuduki-ku,
Yokohama-shi, 224-0054, Japan
Tel: +81 (0) 45 935 1117
Email: info@visioneng.jp

Vision Engineering
(**China**)
11J, International Ocean Building,
720 Pudong Avenue, Shanghai,
200120, P.R. China
Tel: +86 (0) 21 5036 7556
Email: info@visioneng.com.cn

Vision Engineering
(**S.E. Asia**)
Tel: +603 80700908
Email: info@visioneng.asia

Vision Engineering
(**India**)
Email: info@visioneng.co.in

Distributor

Optimax
Imaging Inspection Measurement

Michael Francis House • 3 Trimbush Way
Market Harborough • Leicestershire • LE16 7XY
Registered in England No. 5562754
VAT No. 780 4974 94

T +44 [0]1858 436940 F +44 [0]1858 436941
E info@optimaxonline.com www.optimaxonline.com



Visit our multi-lingual website:

www.visioneng.com